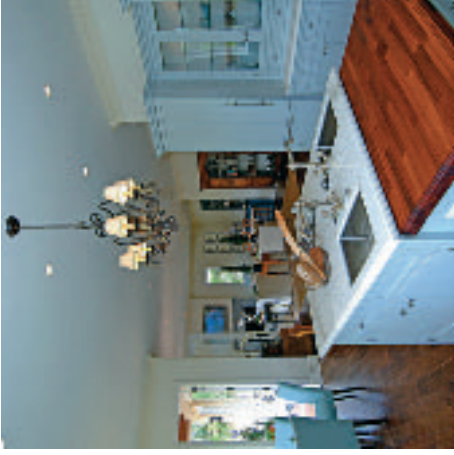
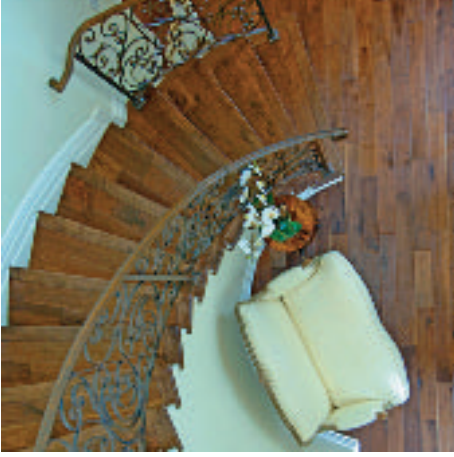
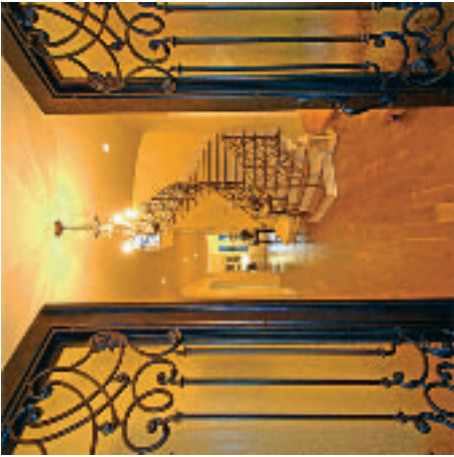




MAISON DES RÊVES

Pacific Palisades, California

Sotheby's
INTERNATIONAL REALTY



Freshly completed, this exquisite Country French-style masterpiece is reminiscent of a villa found in the Côte d'Azur or perhaps in a small village in Provence. With outstanding attention to detail integrated with the latest in home construction and design, builder/owner Tim Marschall continues to set himself apart from the building industry and offers unparalleled quality and craftsmanship.

The Villa is beautifully sited on the widest part of El Medio, just moments from the ocean-view bluffs and is shaded by a gorgeous mature elm tree. Enter the walled courtyard and past a soothing fountain, and the double front doors welcome you to this beautiful oasis. The home boasts an elegant living room with elaborate details, a stunning fireplace and expansive dining room. In

addition, there is a handsome great room with a chef's dream kitchen that must be experienced to appreciate and a bar and fireplace that adorn the family room. Completing this offering is a large powder room, guest suite, laundry room and 2-car garage on the main level, while upstairs there are 3 bedroom suites, 2 balconies and a fantastic, private terrace with mountain views. Fine finishes include a tile roof with exposed corbels and copper gutters and downspouts.

Offered at \$3,750,000

www.607elmedio.com

Brochure no. 0311696

© MMVI Sotheby's International Realty, Inc. All Rights Reserved. Sotheby's International Realty™ is a licensed trademark to Sotheby's International Realty Affiliates, Inc. An Equal Opportunity Company. Equal Housing Opportunity. Sotheby's International Realty, Inc. is Owned And Operated By NRT Incorporated. This material is based upon information that we consider reliable, but because it has been supplied by third parties, we cannot represent that it is accurate or complete, and it should not be relied upon as such. This offering is subject to errors, omissions, changes, including price, or withdrawal without notice.

Sotheby's

INTERNATIONAL REALTY

Santa Monica Brokerage
233 Wilshire Boulevard, Suite 100, Santa Monica, CA 90403
t 310.260.8200 f 310.260.3134
www.siroffices.com

Enzo Ricciardelli
310.260.8275